



**Delivering a cleaner
energy future**

Cam Cluster Project

Summer 2024 Update

Who is SONI – and what do we do?

SONI is the electricity transmission system operator for Northern Ireland. This means we plan for the future of the electricity grid and operate it every minute of every day. This includes interconnecting to neighbouring grids and running the wholesale electricity market. We make sure that everyone has power when they need it, at the most economical price possible. The grid safely brings power from generators and sends it to NIE Networks who then supply electricity to every home, farm, community, and business in Northern Ireland via their distribution network.

As Northern Ireland continues its move toward cleaner energy, the electricity system must also evolve. Investing in and improving the grid is essential to make your supply of electricity more reliable and cost effective. It also supports economic growth, enables competition, and helps to deliver a clean energy future.

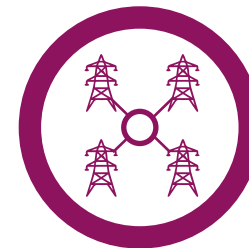
What is the Cam Cluster Project?

SONI is planning to bring forward the Cam Cluster Project - a new cluster substation between Limavady and Coleraine to be connected to both the Coolkeeragh – Limavady and the Coleraine – Limavady 110 kV circuit.

NIE Networks' cluster methodology aims to improve access to the network for renewable generation by grouping generators to create a more efficient connection with reduced environmental impact.

There are a number of approved renewable generation projects which have created the need for a new cluster substation in the Cam area. Plans for the new substation will also prepare for future growth in renewable generation as we decarbonise the electricity network.

As the electricity transmission system operator, SONI is obliged to connect parties who request a connection to the electricity network, subject to the applicant meeting certain conditions. When it comes to connecting sources of renewable power to the transmission grid, SONI is responsible for elements such as technical design, site selection and achieving planning consent for the new connection. These elements happen before the project moves into the construction phase where NIE Networks is then responsible for building and maintaining the infrastructure.



Why are we doing this?

To help facilitate grid connections in the area.

There are already a number of renewable power projects in the local area that have planning permission. This has resulted in the need for the Cam Cluster Project which will provide generation projects with a connection to the grid.



To help deliver climate change targets and decarbonise the power system for future generations.

It is projected that Northern Ireland will require at least another 1,300 MW of electricity from clean sources, to meet the legally binding target of generating 80% of our electricity from renewable sources by 2030. This power will have to be generated, connected to the grid, and delivered throughout Northern Ireland. The proposed Cam Cluster substation will facilitate more renewable energy to be connected to the grid.

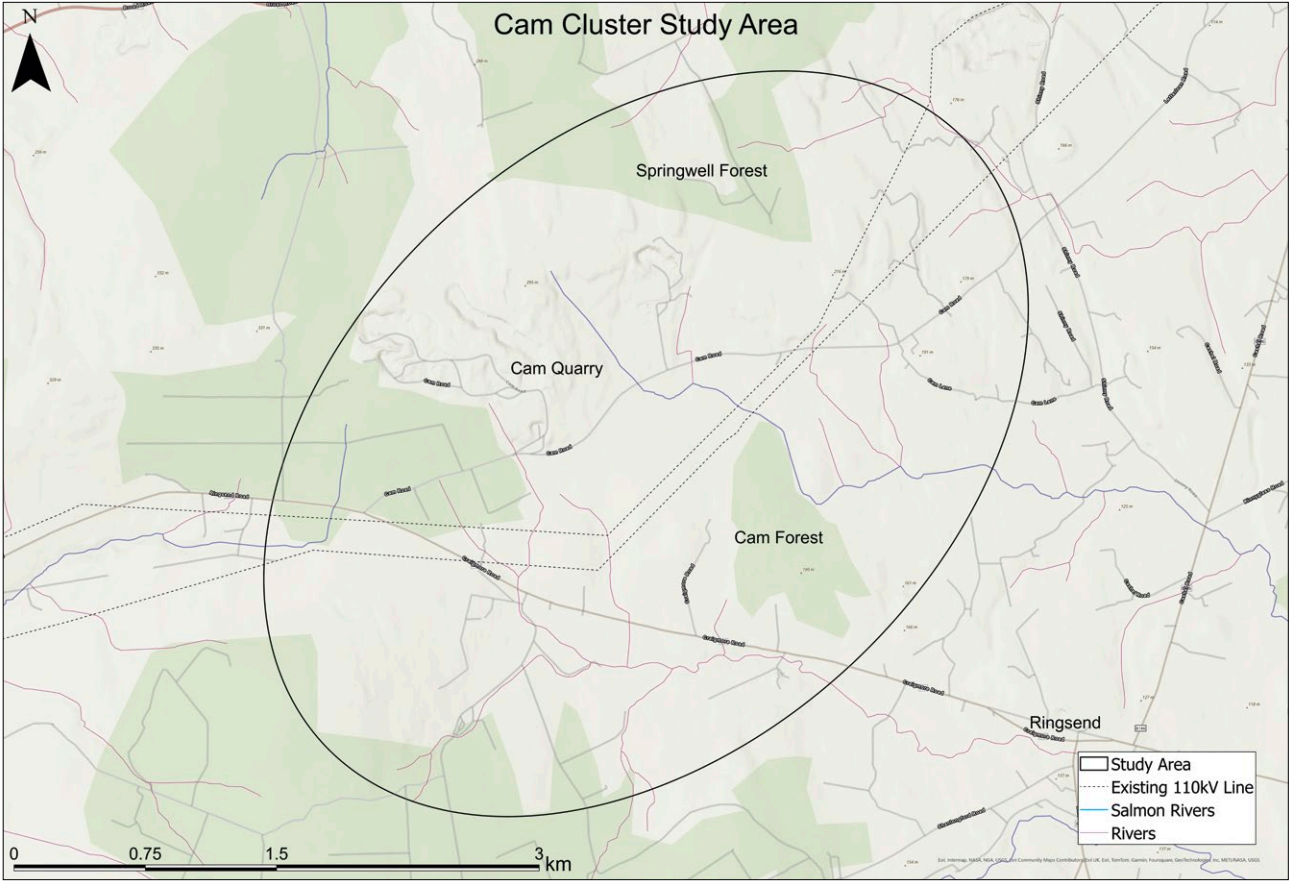


The project will strengthen the local transmission network

The Cam Cluster Project will strengthen the transmission network in the local area and ensure it is fit for future use. This will facilitate economic growth and investment in the coming years.

What is the study area?

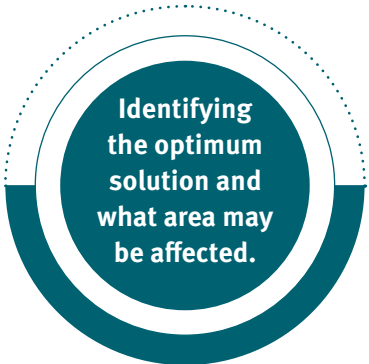
The maps below represent the ‘study area’ for this project and includes the existing circuits between Coleraine and Limavady 110 kV substations.



Our 3-Part Process for Developing the Grid

We are committed to gaining your input on any decisions we make on our investment projects. Our 3-part Process puts stakeholder and public engagement at the heart of how we develop the transmission grid. By working together, we can create a stronger electricity system for Northern Ireland – with the least possible inconvenience to you.

SONI’s Grid Development Process



PART 1
Identifying the optimum solution and what area may be affected.
When we have thoroughly researched the potential solutions, we will have what we call ‘**a best performing technology solution**’. At this point, we provide opportunities for you to have your say, before we finalise the solution and the location for the project.



PART 2
Identifying where the project will be built.
Once we have examined all locations within the general area for the project, we narrow our choice to what we call ‘**a best performing location**’. Again, we provide opportunities for you to participate in the process and tell us what you think before we finalise the location.



PART 3
Planning application to project handover to NIE Networks.
Should we receive a favourable decision from the planning authority, we will hand the project over for NIE Networks to construct and energise. We will continue to engage with local communities and landowners in the vicinity of the project, and make sure everyone is kept informed.

The Cam Cluster Project is currently in Part 2 of SONI’s Grid Development Process.





What's happening now?

SONI are now moving forward with the preliminary preferred option for this project which includes:

- A new 110/33 kV single transformer 90 MVA substation with additional capacity for a future second transformer
- Nine 110 kV bays sufficient for five lines, two transformers, two bus-couplers and additional space for future section switches
- Turn in of the existing Coolkeeragh – Coleraine 110 kV circuit
- Turn in of the existing Limavady – Coleraine 110 kV circuit

During Part 2a, SONI will be engaging with a range of local stakeholders including local residents, elected representatives, landowners and local businesses, to discuss their views on the project. This engagement will include individual briefings and non-statutory public consultation events where the project team will present the preferred option for developing the project and the rationale behind it.

At this stage of consultation, we are seeking feedback from the public to help shape the final proposal i.e. the location of the new cluster substation. We know that no one knows an area better than those who live and work in it, which is why this feedback is so valuable.

What happens next?

At the end of this phase of consultation, we will publish a report outlining all the feedback received from stakeholders. In tandem with other environmental and technical studies, this report will help shape the design of the proposals and the location of the new substation.

Following the completion of Part 2a, SONI will then move to Part 2c where extensive Pre-Application Community Consultation (PACC) for the project will be undertaken ahead of the submission of a planning application to Causeway Coast & Glens Borough Council.

How can I provide feedback?

Your feedback is important to us, there are many ways to get involved and provide feedback. These include:

1. Visiting the SONI Consultation Portal: <https://consult.soni.ltd.uk/>

2. Attending our consultation event where members of the project team will be available to discuss various aspects of the project:

2pm – 8pm Wednesday 22 May 2024

Roe Valley Arts & Cultural Centre, Keenaught Suite
24 Main Street Limavady, BT49 0FJ

3. Email your submission to us at info@soni.ltd.uk

4. Write your own submission and post it back to us at:

Cam Cluster Project, SONI Ltd, Castlereagh House, 12 Manse Road, Belfast BT6 9RT.

We welcome your feedback until Friday 7th June 2024.

You can follow us on  Linked In at **SONI Ltd**  Twitter at **@Soni_Ltd**  **SONIElectricityNI**

You can also visit our project webpage at
<https://www.soni.ltd.uk//the-grid/projects/cam-cluster/the-project/>





Printed on recycled paper



**Delivering a cleaner
energy future**