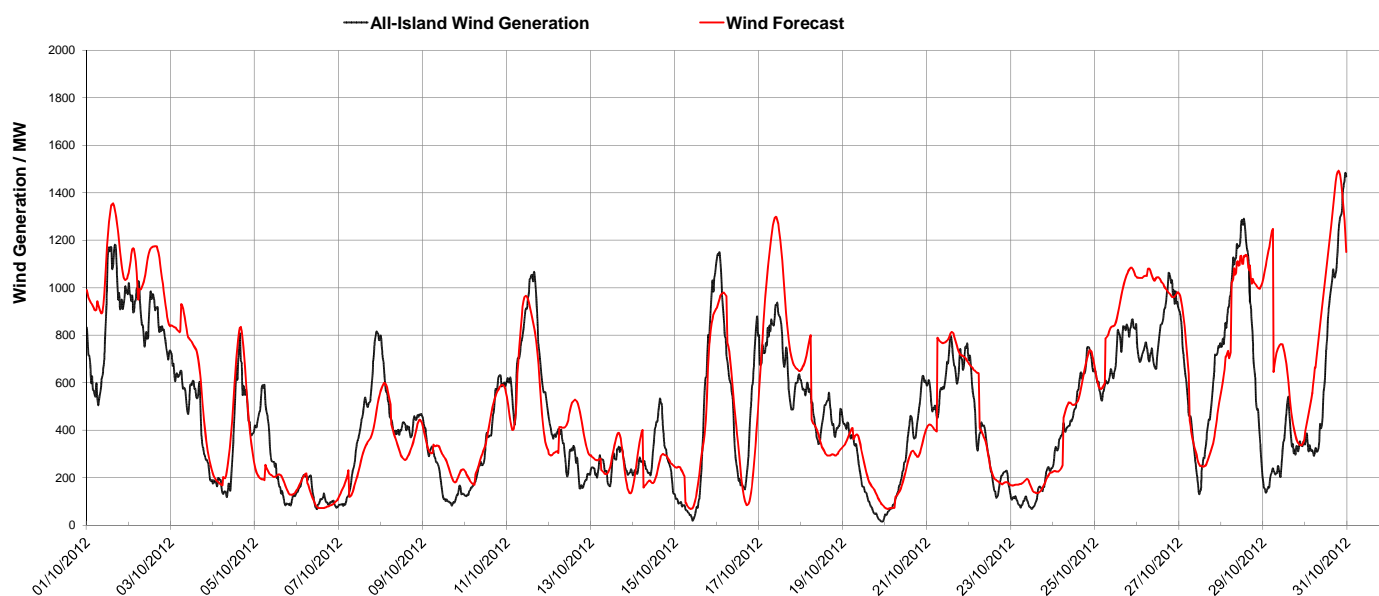


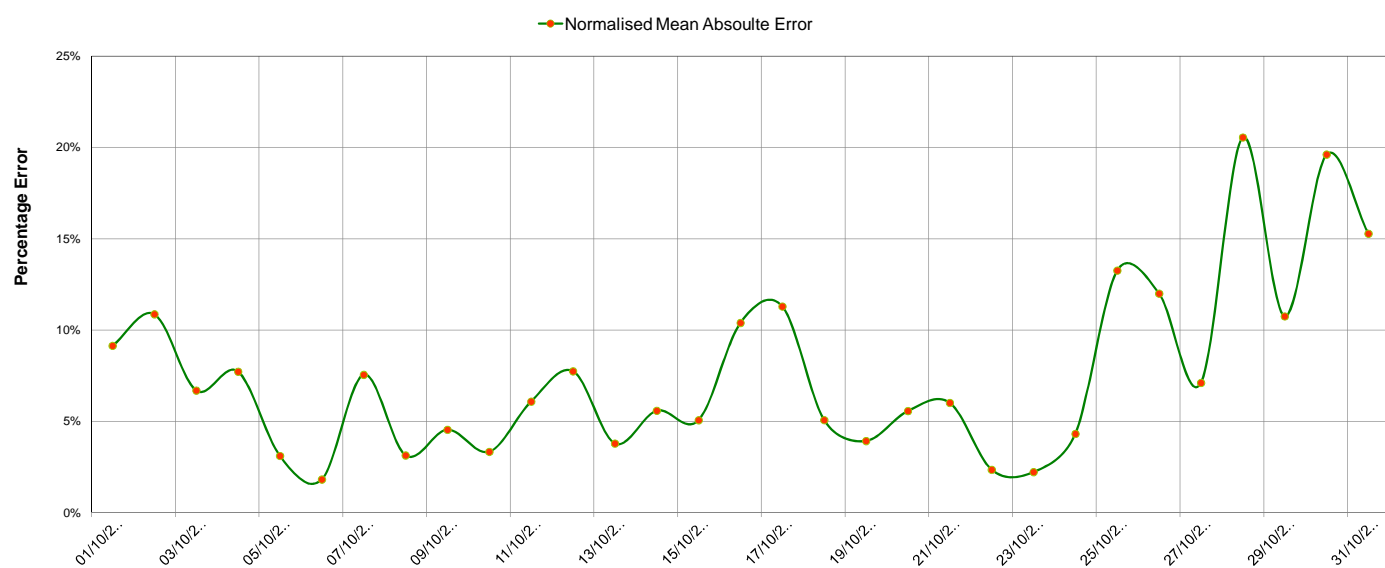
## ▼ Forecast Data Available Day Ahead ▼

TSO	Installed Wind Capacity (MW)	Forecast Error (MW)		Normalised Mean Absolute Error (NMAE)		
		Max Generated > Forecast	Max Generated < Forecast	Max	Min	Average
EirGrid	1597	997	-490	60.9%	0.0%	8.2%
SONI	398	239	-161	53.2%	0.0%	7.5%
All-Island	1995					

## ▼ All-Island Wind Generation in Day Ahead Forecast ▼



## ▼ NMAE Available Day Ahead ▼



## Notes

- Forecast data does not take into account windfarm outages
- Installed wind includes all windfarms connected at both Transmission and Distribution levels in Ireland and Northern Ireland
- Forecast does not allow for potential dispatching down of windfarms.

## Statistical definitions

•Normalised Mean Absolute Error (NMAE) - The absolute difference between the forecasted wind output and the actual output divided by the sum of all the windfarm capacity. This puts the error in context of the total capacity so the error can be consistently compared.

