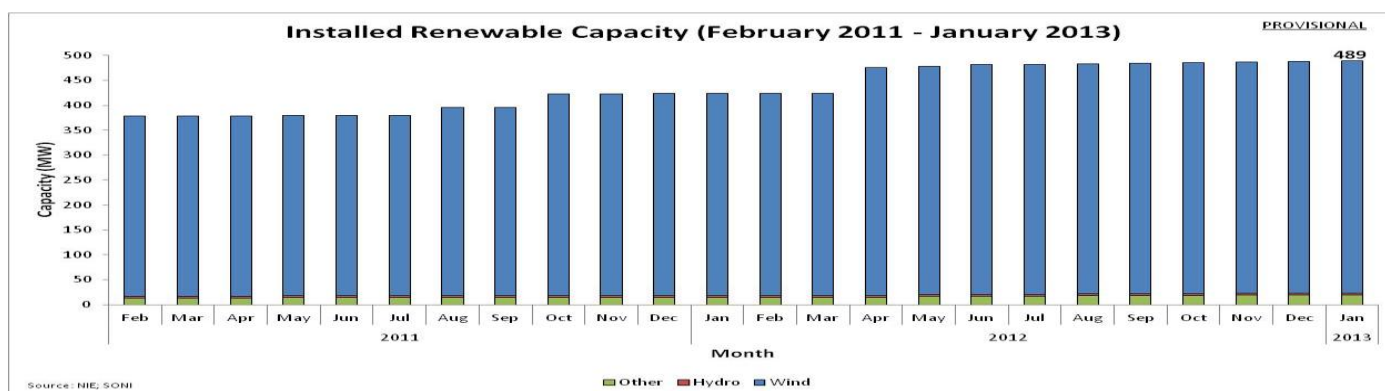
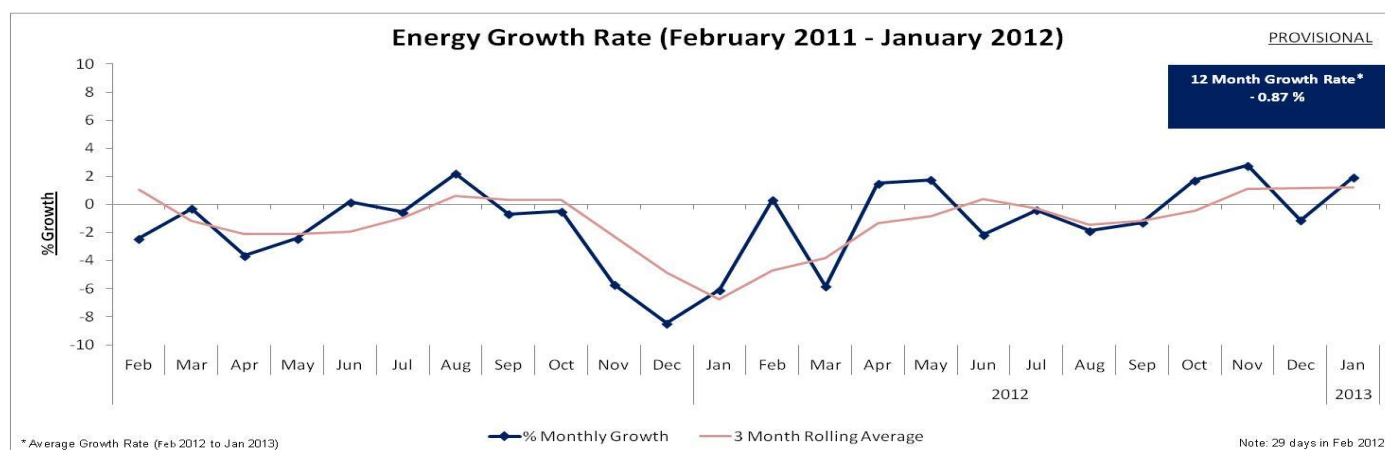


Northern Ireland Monthly Electricity Statistics Update – January 2013

System Statistics and Records:

Monthly Electricity Demand	851.14GWh	January 2013
Monthly Electricity Demand From Renewables ¹	129.72GWh	January 2013 (Wind ³ = 122.37 GWh)
Monthly Electricity Demand Growth Rate	1.99%	Jan 2013 vs Jan 2012
Year To Date Electricity Demand Growth Rate	1.99%	Jan-Dec 2013 vs Jan- Dec 2012
Monthly Maximum Load	1706 MW	Jan 2013
Monthly Minimum Load	670 MW	Jan 2013
2013 Year To Date Maximum Load	1766 MW	17:30 hrs on Monday 21 st January 2013
2013 Year To Date Minimum Load	670 MW	06:00 hrs on Sunday 6 th January 2013
All Time Maximum Peak Demand	1777 MW	18:00 hrs on 22 nd December 2010
Installed Dispatchable Capacity ²	2342 MW	As at 31 st January 2013
Installed Renewable Capacity ¹	489 MW	As at 31 st January 2013 (Wind ³ = 466 MW)
2013 Maximum Wind Output ³	397 MW	04:30 on 31 st January 2013



¹ Includes Large Scale Wind (≥ 5 MW = 450.9 MW), Small Scale Wind, Hydro, Tidal, Biomass, PV and Landfill Gas data available to SONI.

² Excludes import capacity of Moyle. (Import = 450MW Nov-Mar & 410MW Apr-Oct. Export = 295MW Sep-Apr & 287MW May-Aug).

³ Includes Large Scale Wind and Small Scale Wind.

If you need any further information on these statistics, please email enquiries@soni.ltd.uk or go to www.soni.ltd.uk.

All the above data is preliminary and is expressed in terms of Sent-Out (Exported) generation available to SONI.

Further information on monthly wind and fuel mix can be found at:

<http://www.eirgrid.com/operations/systemperformance/data/all-island-wind-and-fuel-mix-report>

While every effort has been made in the compilation of this report to ensure that the information contained herein is correct we cannot accept any responsibility or liability whatsoever for any damage caused by reliance on the information presented here.