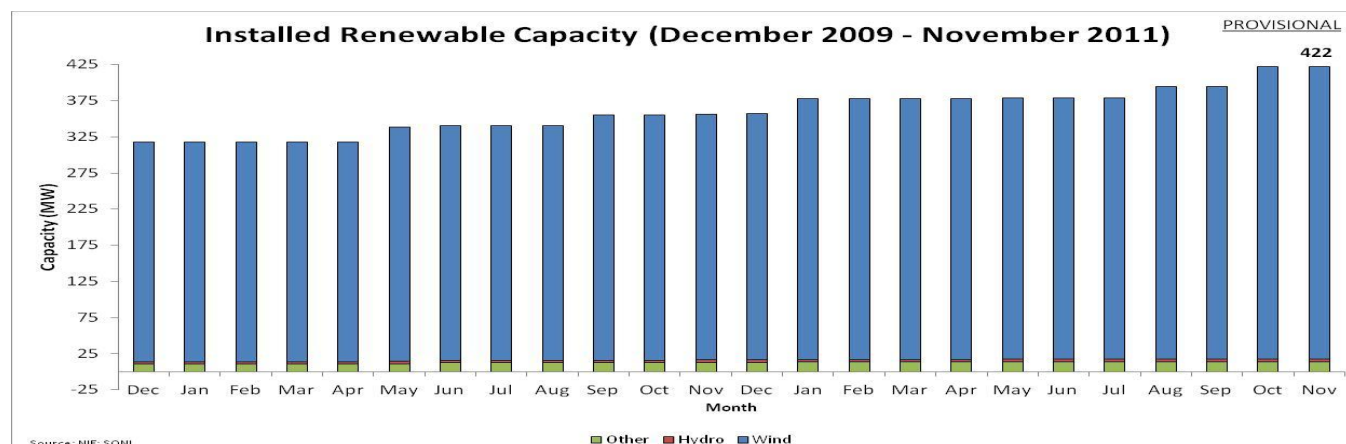
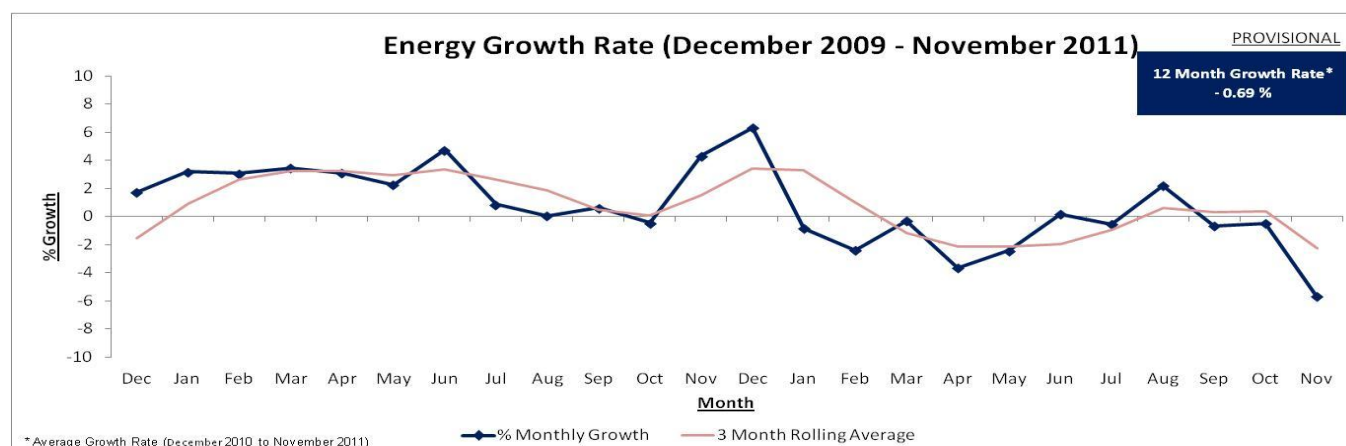


Northern Ireland Monthly Electricity Statistics Update – November 2011

System Statistics and Records:

Monthly Electricity Demand	771.82 GWh	November 2011
Monthly Electricity Demand From Renewables ¹	140.99 GWh	November 2011
Monthly Electricity Demand Growth Rate	-5.68%	November 2011 vs November 2010
Year To Date Electricity Demand Growth Rate	-1.38%	Jan – Nov 2011 vs Jan – Nov 2010
Monthly Maximum Load	1605 MW	November 2011
Monthly Minimum Load	637 MW	November 2011
2011 Year To Date Maximum Load	1766 MW	17:30 hrs on Monday 10 th January 2011
2011 Year To Date Minimum Load	534 MW	06:00 hrs on Sunday 10 th July 2011
All Time Maximum Peak Demand	1777 MW	18:00 hrs on 22 nd December 2010
Installed Dispatchable Capacity ²	2321 MW	As at 30 th November 2011
Installed Renewable Capacity ¹	422 MW	As at 30 th November 2011
2011 Maximum Wind Output ³	378 MW	18:00 hrs on 17 th November 2011

Graphs:



¹ Includes Large Scale Wind ($\geq 5\text{MW}$ = 397.8 MW), Small Scale Wind, Hydro, Tidal, Biomass, PV and Landfill Gas

² Excludes import capacity of Moyle. (Import = 450MW Nov-Mar & 410MW Apr-Oct. Export = 295MW Sep-Apr & 287MW May-Aug).

³ Includes Large Scale Wind and Small Scale Wind

If you need any further information on these statistics, please email enquiries@soni.ltd.uk or go to www.soni.ltd.uk

All the above data is preliminary and is expressed in Sent-Out (Exported) terms

While every effort has been made in the compilation of this report to ensure that the information contained herein is correct we cannot accept any responsibility or liability whatsoever for any damage caused by reliance on the information presented here.