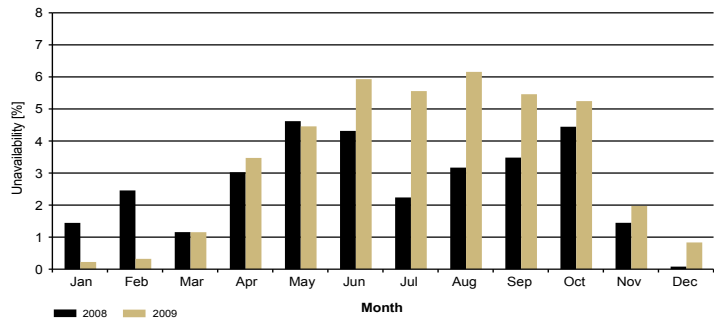


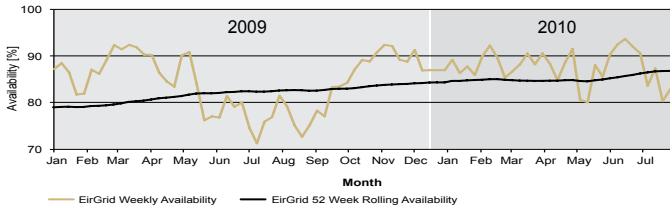
EirGrid Transmission System Availability

Monthly Variation of System Non-Availability – This chart contains data up to the 31 December 2009

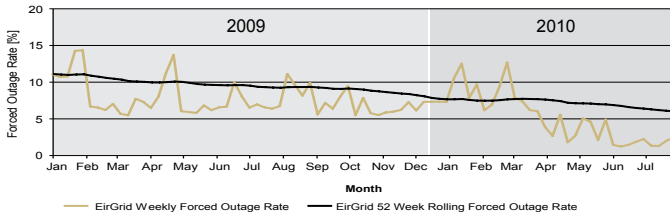


EirGrid Generation System Availability³

52-Week Rolling & Weekly Availability – This graph contains data up to the 31 July 2010



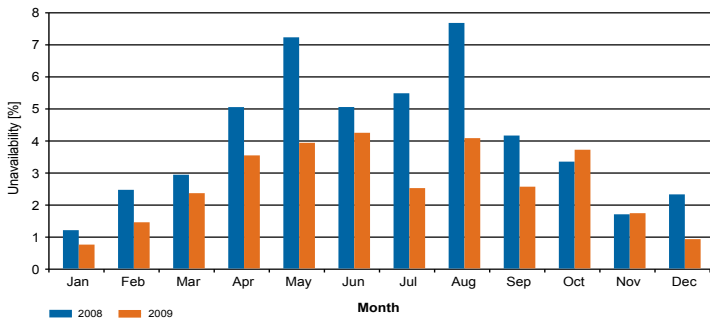
52-Week Rolling & Weekly Forced Outage Rate – This graph contains data up to the 31 July 2010



³ Dispatchable Plant Only

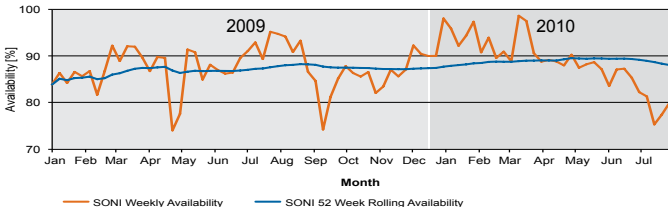
SONI Transmission System Availability

Monthly Variation of System Non-Availability – This chart contains data up to the 31 December 2009

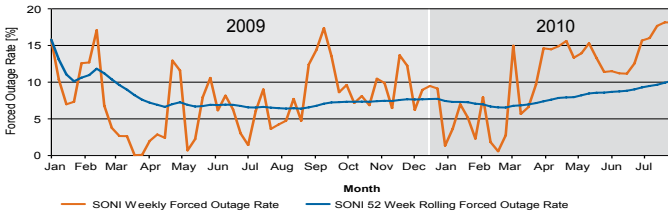


SONI Generation System Availability⁴

52-Week Rolling & Weekly Availability – This graph contains data up to the 31 July 2010



52-Week Rolling & Weekly Forced Outage Rate – This graph contains data up to the 31 July 2010

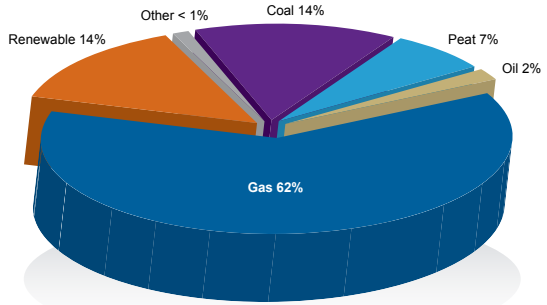


⁴ Dispatchable Plant Only

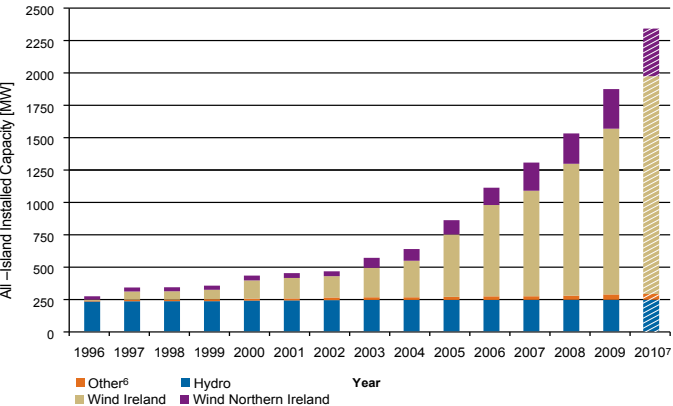
Electricity Consumption & Renewable Capacity

All-Island Electricity Consumption by Generation Source⁵

2009



Installed Renewable Capacity – This chart contains data up to the 31 July 2010



⁵ Source SEMO Market Data

⁶ Others include Landfill Gas and Biomass

⁷ Projected based on connection dates



TRANSMISSION SYSTEM
INFORMATION BOOKLET
August 2010



Overview of EirGrid plc

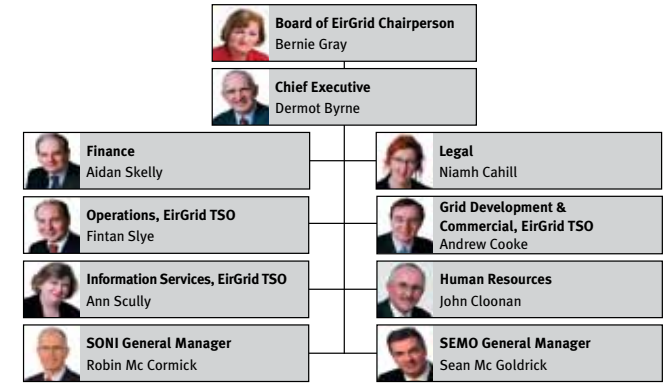
EirGrid plc is a leading Irish energy business, dedicated to the provision of transmission and market services for the benefit of electricity consumers. It is a state-owned commercial company.

EirGrid holds licences as independent electricity Transmission System Operator (TSO) and Market Operator (MO) in the wholesale trading system in Ireland, and is the owner of the System Operator Northern Ireland (SONI Ltd), the licenced TSO and market operator in Northern Ireland, which it acquired during 2009. The Single Electricity Market Operator (SEMO) is part of the EirGrid Group, and operates the Single Electricity Market on the island of Ireland.

In its role of TSO in Ireland, EirGrid operates and maintains a safe, secure, reliable, economical and efficient transmission system, as well as developing key infrastructural projects which are vital for the socio-economic development of the State. As TSO, EirGrid is regulated by the Commission for Energy Regulation (CER).

In its role of TSO in Northern Ireland, SONI Ltd has the responsibility of ensuring the safe, secure and economic operation of the high voltage electricity system. It is regulated by the Northern Ireland Authority for Utility Regulation (NIAUR). The organisational structure for the EirGrid Group is displayed below.

This booklet provides recent information on the Transmission System in Ireland and Northern Ireland.



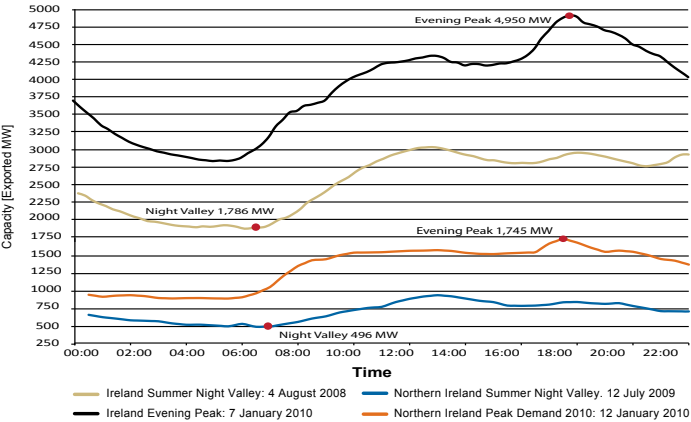
FOR FURTHER INFORMATION CONTACT:

	EirGrid TSO	SEMO	SONI
Tel	+353 (0)1 7026642	+353 (0)1 70468	+44 (0)28 90794336
Email	info@eirgrid.com	markethelpdesk@sem-o.com	enquiries@soni.ltd.uk
Website	www.eirgrid.com	www.sem-o.com	www.soni.ltd.uk

(1) While every effort has been made in the compilation of this booklet to ensure that the information contained herein is correct EirGrid plc cannot accept any responsibility or liability whatsoever for any damage however caused by reliance on the information presented here.

System Demand and Growth¹

Summer and Winter Record Load Curves – This graph contains data up to the 31 July 2010



Total Operational Generation Capacity – This table contains data up to the 31 July 2010

	Dispatchable	Ireland		Northern Ireland	
		Capacity [MW]	% of Total Capacity	Capacity [MW]	% of Total Capacity
Transmission System	Fully	6,183	78%	2,736	88%
	Non/Partially	744	9%	0	0
Distribution System	Fully	104	1%	28	1%
	Non/Partially	906	11%	351	11%
Total Operational Capacity [MW]		7,937		3,115	

System Records – This table contains data up to the 31 July 2010

Record	Ireland		Northern Ireland	
	Date	Exported [MW]	Date	Exported [MW]
Winter Night Valley	08 January 2010	2,860	01 November 2009	605
Summer Night Valley	04 August 2008	1,786	12 July 2009	496
Mid - Day Peak	04 January 2008	4,368	11 January 2010	1,600
Evening Peak	07 January 2010	4,950	12 January 2010	1,745
Maximum Wind Generation	05 April 2010	1,120	04 July 2010	289

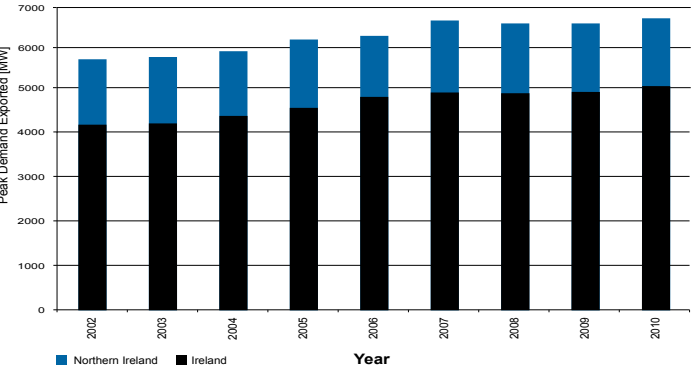
Record	Year	Exported [GWh]	Date	Exported [GWh]
Total Energy Production	2008 ²	28,341	2008 ²	9,257

¹ Net/Exported Basis

² Note that 2008 was a leap year

Transmission System Information

Historical Peaks – This chart contains data up to the 31 July 2010



Transmission System Infrastructure – This table contains data up to the 31 December 2009

Plant Type	Ireland		Northern Ireland	
	No. of Items	Circuit Length [km]	No. of Items	Circuit Length [km]
110 kV Circuits	183	4,087	84	1,236
220 kV Circuits	53	1,835	n/a	n/a
275 kV Circuits	n/a	n/a	22	728
275 kV Tie-lines	2	19	2	75
400 kV Circuits	3	439	n/a	n/a
Circuit Total	241	6,380	108	2,039
Plant Type	Ireland		Northern Ireland	
	No. of Items	Transformer Capacity [MVA]	No. of Items	Transformer Capacity [MVA]
110/33 kV Transformers	n/a	n/a	71	4,290
220/110 kV Transformers	39	7,064	n/a	n/a
275/110 kV Transformers	n/a	n/a	16	3,840
275/220 kV Transformers	3	1,200	n/a	n/a
400/220 kV Transformers	5	2,500	n/a	n/a
Transformer Total	47	10,764	87	8,130
Station Total	152		43	



Transmission System 400kV, 275kV, 200kV and 110kV

- 400kV Lines
- 275kV Lines
- 220kV Lines
- 110kV Lines
- 220kV Cables
- 110kV Cables
- 400kV Stations
- 275kV Stations
- 220kV Stations
- 110kV Stations
- Phase Shifting Transformer
- Transmission Connected Generation
- Hydro Generation
- Thermal Generation
- Pumped Storage Generation
- Wind Generation

